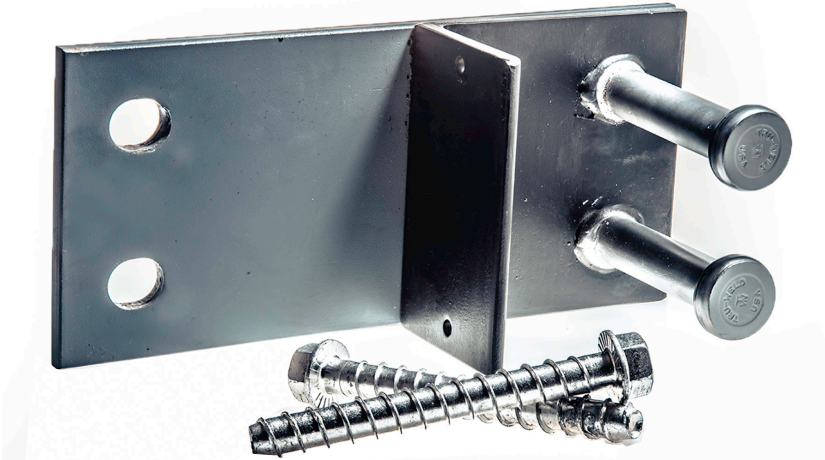




SC-10K

**PATENTED PRECAST CONCRETE
WALL PANEL ANCHOR
SHEAR CONNECTION**

SIMPLE • SAFE • SECURE™



CONNECTION PERFECTION!

The *PATENTED* AdvanConn® **SC-10K Shear Connection** is a weldless panel-to-panel connection device that provides for more than 10,000 lbs of shear transfer with unrestrained panel expansion and contraction.

SIMPLE INSTALLATION

- Eliminates Welding
- Easy to train even the greenest employee

SAFETY ASSURED

- Mechanical connection – eliminates the uncertainty of field welding
- Quick, positive visual inspections

SECURE CONNECTION

- 10,000 lbs shear transfer panel-to-panel
- Installs with same tools used for bracings
- Allows for unrestrained panel expansion and contraction



"GREAT innovative products that just make sense!"
– Mark Stroupe – RAM Tool, Roanoke, VA

FOR MORE INFORMATION



(937) 356-3759
theadvanconn.com

