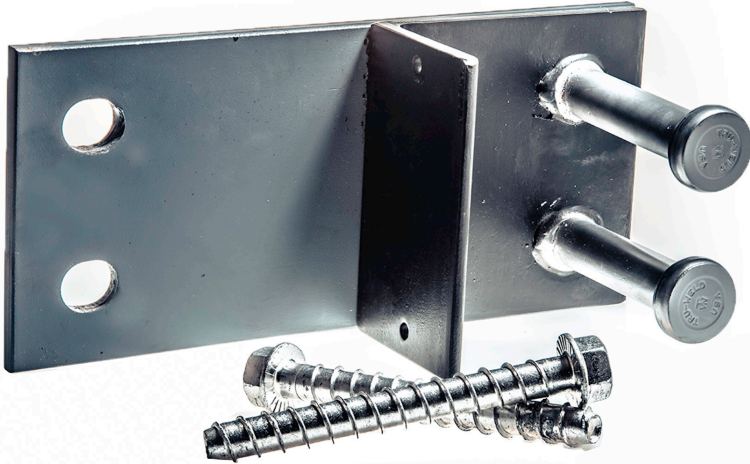




# SC-10K

## PRECAST CONCRETE WALL PANEL ANCHOR SHEAR CONNECTION

**SIMPLE • SAFE • SECURE™**



### CONNECTION PERFECTION!

The AdvanConn® **SK-10 Shear Connection** is a weldless panel-to-panel connection device that provides for more than 10,000 lbs of shear transfer with unrestrained panel expansion and contraction.

### SIMPLE INSTALLATION

- Eliminates Welding
- Easy to train even the greenest employee

### SAFETY ASSURED

- Mechanical connection - eliminates the uncertainty of field welding
- Quick, positive visual inspections

### SECURE CONNECTION

- 6,000 lbs shear transfer panel-to-panel
- Installs with same tools used for bracings
- Allows for unrestrained panel expansion and contraction

*"GREAT innovative products that just make sense!"*

- Mark Stroupe - RAM Tool, Roanoke, VA



**For More Information Contact Robert Foley, P.E.**

bob@theadvanconn.com • 937-689-7725

